

An ISO 9001 Certified Company



*Innovating since 1977*

# ROPE TENSION Load Cell



## **APPLICATIONS:**

- Crane/ Hoist Overload Monitoring Systems
- Rope Tension Monitoring Systems
- Tower Testing Applications
- Lift Overload Monitoring Systems

# ROPE TENSION LOAD CELL

## Technical Specifications

### MOUNTING

- Simple Sideways Mounting
- No Cutting or Opening the Rope
- Easy to mount anywhere on the rope

### SPECIFICATIONS

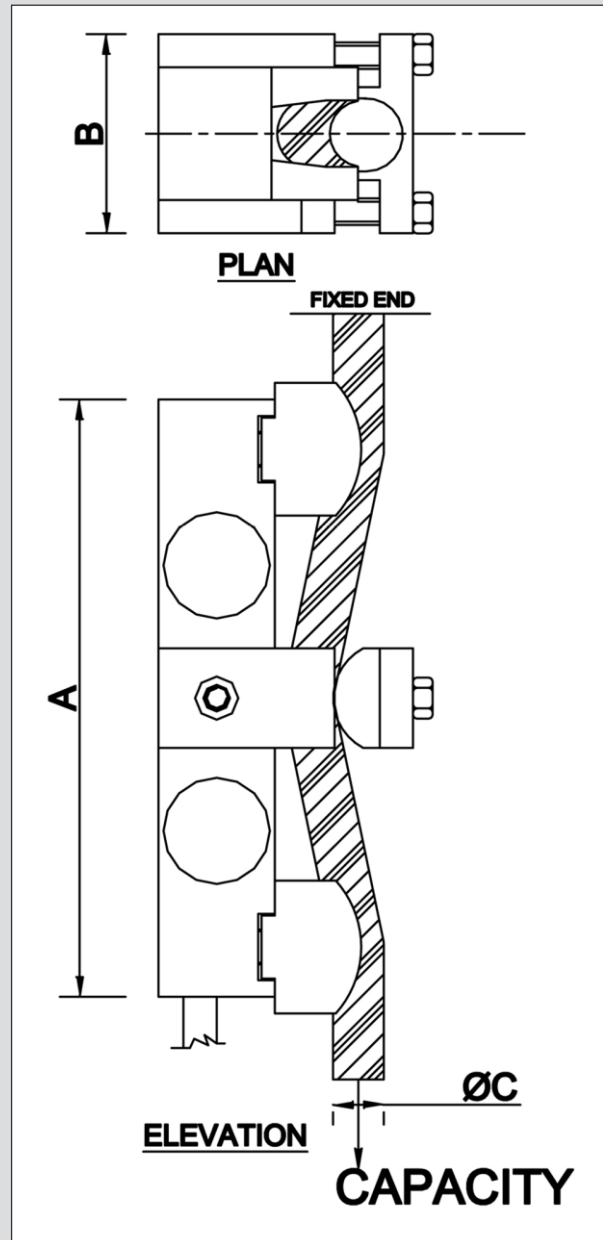
Loading Capacity: 5T/ 10T  
Rated Output: 1:0.01mVN  
Safe Overload: 150%  
Ultimate Overload: 300%  
Protection: IP 68

### LIFT OVERLOAD PROTECTION

- Conventional method of Lift Overload Protection involves 'Over Current Tripping Mechanism' which activates the protection circuit when the Lift Driving Motor current exceeds the set limit while trying to lift overload.
- Since voltage fluctuation causes the motor current to vary, the tripping set point becomes unreliable making the lift operation erratic.
- The tripping mechanism using Rope Tension Load Cell purely depends on the actual load rather than the fluctuating current or voltage making it highly reliable.
- Simple mounting of Rope Tension Load Cell like a side attachment without cutting the wire make it easy to mount anywhere on a lift support rope.

### DIMENSION DETAILS:-

CAPACITY (Ton)	MODEL NO	DIMENSIONS (mm)		
		A	B	ØC
3	RT033H9	180	40	14-22
5,10,15	RT053H9,RT014H9,RT153H9	230	60	16-36



## IPA Private Limited

472/B2, 12th Cross, IV Phase,  
Peenya Industrial Area, Bangalore - 560 058  
Ph: 080-28362851 / 28361789  
Email: sales@ipaindia.com

[www.ipaindia.com](http://www.ipaindia.com)



intertek

An ISO 9001 Certified Company



014

CAT.NO-RTL-01-03/2023