

Single Shear Load Cell

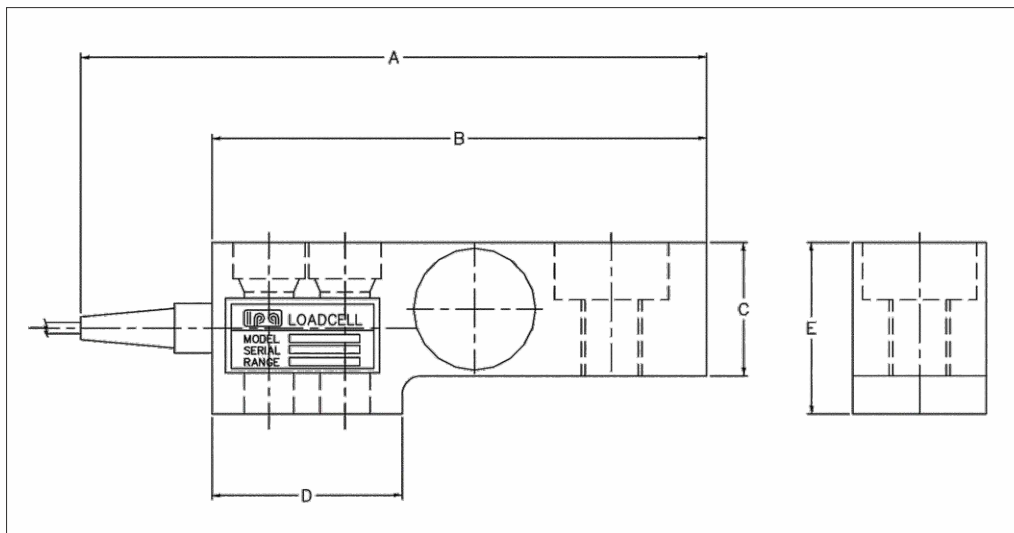


Similar to the bending beam, the shear beam loadcells can be used in very harsh industrial environments for measurement of compressive and tensile forces.

APPLICATIONS:- Tank weighing and vessel weighing, dynamic weighing typically in conveyor applications, platform scales etc.

DIMENSION DETAILS:-

CAPACITY (Ton)	MODEL NO	DIMENSIONS (mm)				
		A	B	C	D	E
1,1.5,2	SB013HO,SB152HO,SB023HO	180	130	35	50	45
3,5,7	SB033HO,SB053HO,SB073HO	235	185	50	100	60



Parameters	Specified Value	
Capacity	1 Tonnes, 1.5 Tonnes, 2 Tonnes	3 Tonnes, 5 Tonnes, 7 Tonnes
Model	SB013HO, SB152HO, SB023HO	SB033HO, SB053HO, SB073HO
Type	Strain gauge based	Strain gauge based
Gauge Resistance	350 Ohms	350 Ohms
Rated Output	1.5 mV/V, 1.5mV/V, 2mV/V	1.5 mV/V, 2.0mV/V, 2.0mV/V
Non linearity	±0.05%	±0.05%
Repeatability	±0.05%	±0.05%
Creep on Load	±0.05%	±0.05%
Zero Balance Voltage	±0.2mV	±0.2mV
Input resistance	390 ± 10 Ohms	390 ± 10 Ohms
Output resistance	350 ± 2 Ohms	350 ± 2 Ohms
Compensated Temp Voltage	5-55°C	5-55°C
Operating Temp Voltage	5-70°C	5-60°C
Temp Effect on Span	0.006%/°C	0.006%/°C
Temp Effect on Tare	0.008%/°C	0.008%/°C
Excitation Voltage	10V (Max.12V)	10V DC
Safe Overload	200%	200%
Ultimate Overload	300%	300%
Insulation		
Resistance Bridge	>5000M Ohms at 30V DC at 30°C	>5000M Ohms at 30V DC at 30°C
Protection	IP-68	IP-68
Cable	4 Core Shielded PU Sheathed 4 Mtrs	4 Core Shielded PU Sheathed 4 Mtrs