

An ISO 9001 Certified Company

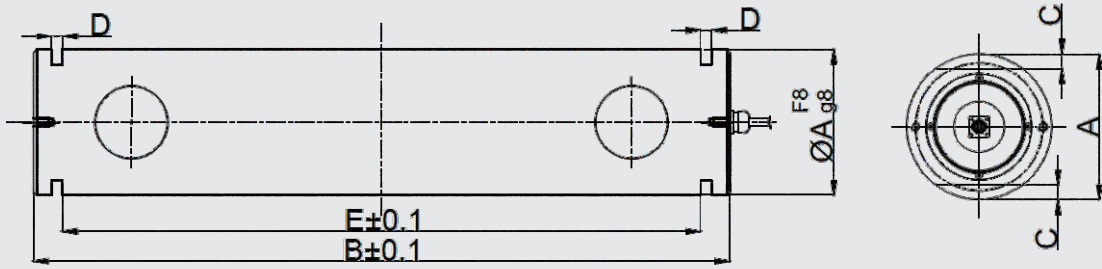


## Shear Pin Series Load Cell

Customised to suit the application, these loadcells are built to replace the pin that takes the load, like in pulleys & pivot points. The output is highly linear and can be used to indicate the load and also for overload protection purpose. IPA has the capability to build these customised loadcells in-house and has the capability to calibrate loads up to 1000T.

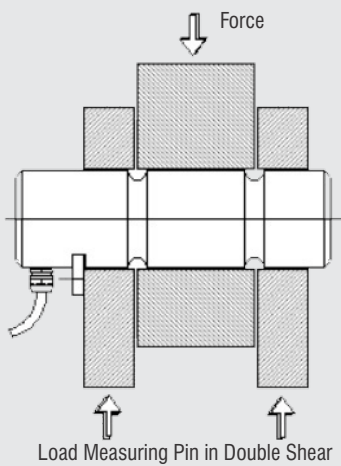
# Shear Pin Series Load Cell

## Dimension Details



Load Measuring Pin

## Typical Mounting Structure



Load Measuring Pin in Double Shear

## Applications

- Crane Weighing & Overload Protection System
- Rope, Chain & Brake Anchors
- Mooring Lines
- Hoisting Gear
- Winches
- Laddle Weighing (Trolley Type)
- Quick Release

## Technical Specifications

PARAMETERS	SPECIFIED VALUE	
Model	SP SERIES	
Capacity of Load Cell	1T – 300T	
Type	Strain Gauge Based	
Accuracy (Fs)	±0.1% to 0.5% OF FS	
Sensitivity	1 mV/V ±0.01	
Creep on load (30 Min)	±0.1%	
Zero Balance	±0.2mV	
Excitation	10-12 VDC	
Temp. Effect on Span	0.006%/°C	
Temp. Effect on Tare	0.008%/°C	
Compensated Temp Range	5-55 °C	
Operating Temp Range	5-70 °C	
Input Resistance	390 ± 10Ω	
Output Resistance	350 ± 4Ω	
Insulation resistance bridge to case at 30v DC at 30 °C	5000MΩ	
Safe Over Load	150%	
Ultimate Overload	300%	
Protection	IP 55 - IP 67	
Material	Alloy Steel/Stainless Steel	
Cable Length	4m	
Type	Analog	Digital
Digital Filter		Rolling Average-15
No.of Bus Addresses		100
Current Consumption		30mA
Conversion Rate		80 sps
Conversion Type		Sigma -Delta
Termination	Integrated Connector	Detachable Connector
Terminal	4 core shielded	A } RS 485
	Black- +Input	
	Red- +Output	C -Common
	Green- -Input	D -Excitation
	White- -Output	

## IPA Pvt. Ltd.

472/B2, 12th Cross, IV Phase,  
Peenya Industrial Area, Bangalore - 560 058  
Ph: 080-28362851 / 28361789  
Email: sales@ipaindia.com  
www.ipaindia.com



Intertek



014

An ISO 9001 Certified Company